

Imprimir via Eduroam

Procedimentos para instalar a impressora LaserMonoECO (IE) e imprimir estando conectado no Eduroam



- 1 Baixe o instalador do drive nesse link:
<https://www.eco.unicamp.br/drivers/SamsungUniversalPrintDriver3.exe>



Execute o arquivo:
SamsungUniversalPrintDriver3.exe



É necessário ter privilégio administrativo no notebook

3

Selecione: **Install**

Printer Software

Install
Select this option if you want to install the software.

Extract
Select this option if you want to extract the software to the specified location.

4

OK Cancel

Clique em: **OK**

Samsung Printer Installer

1. Welcome
2. Connecting Printers
3. Installation
4. Finish

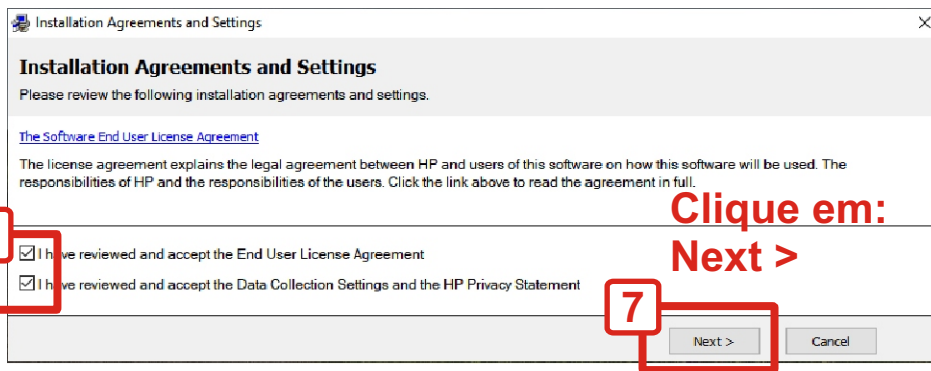
Samsung Printer Installer

5

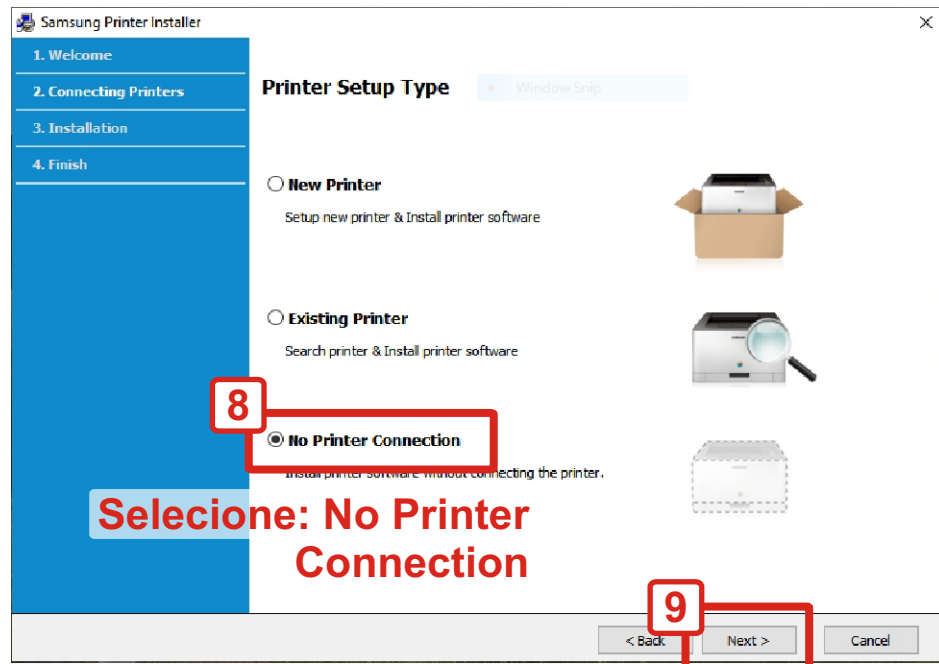
Next > Cancel

Clique em: **Next >**

6
Marque as opções

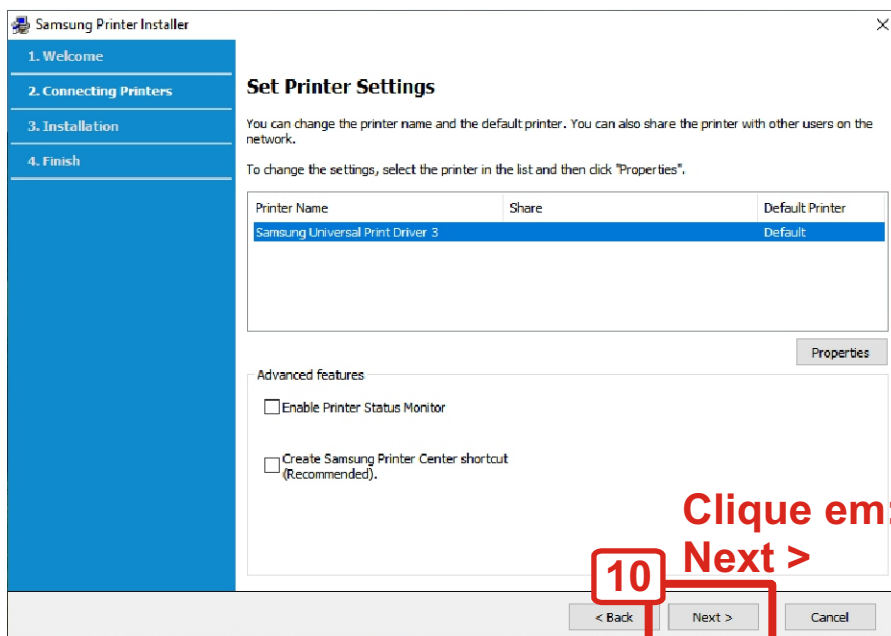


7
Clique em: Next >

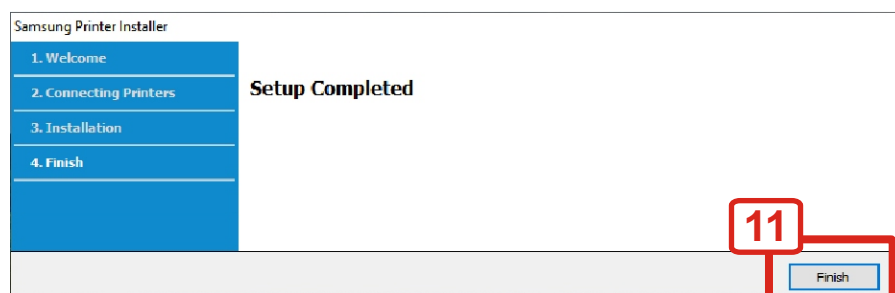


8
Selecione: No Printer Connection

9
Clique em: Next >



10
Clique em: Next >



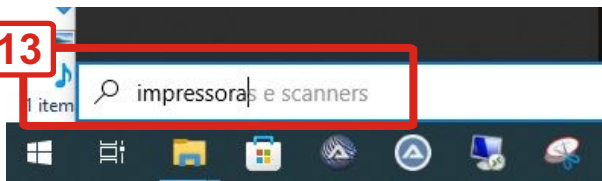
11
Clique em: Finish

12



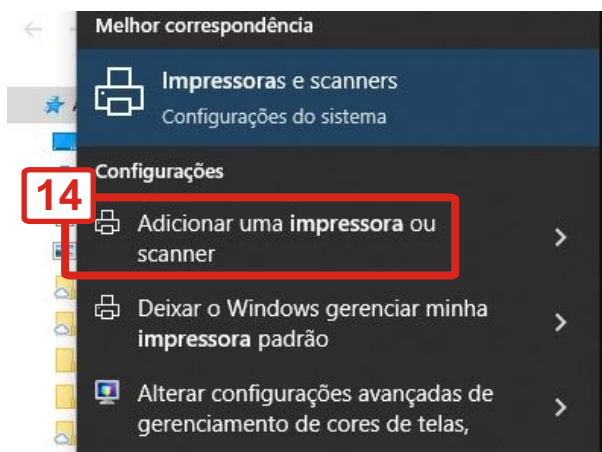
Pressione simultaneamente as teclas: Windows e Q

13



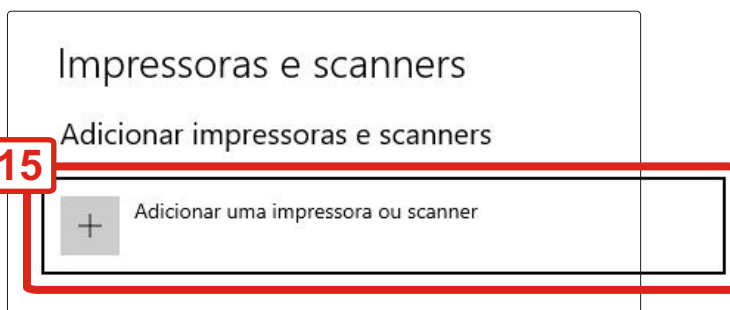
Na barra de pesquisa digite: impressora

14



Clique em: Adicionar uma impressora ou scanner

15



16

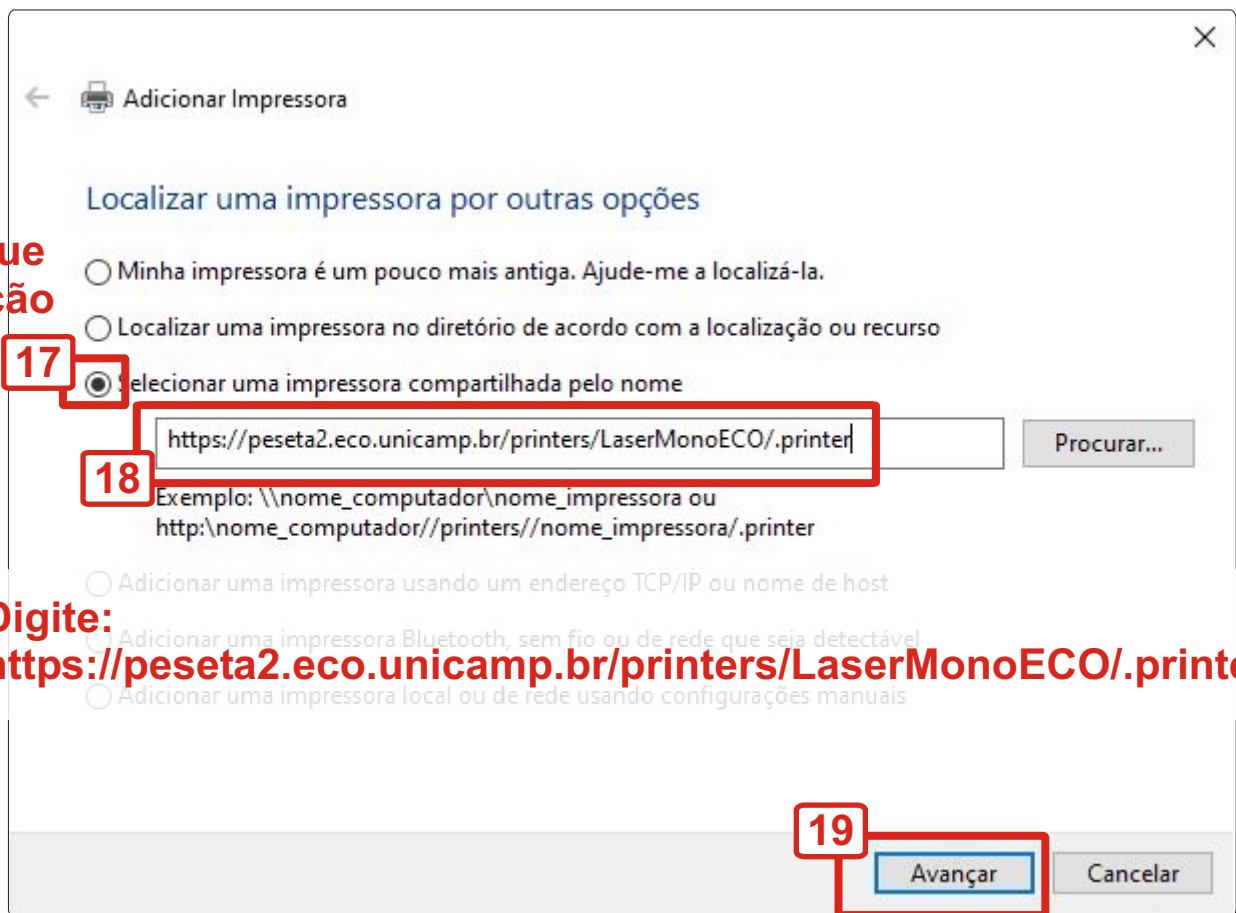
Impressoras e scanners
Adicionar impressoras e scanners



Procurando impressoras e scanners

A impressora que eu quero não está na lista

Aguarde e clique em: A impressora que eu quero não está lista



Marque a opção

17

Selecionar uma impressora compartilhada pelo nome

18

https://peseta2.eco.unicamp.br/printers/LaserMonoECO/.printer

Procurar...

Exemplo: \\nome_computador\nome_impressora ou
http://nome_computador/printers/nome_impressora.printer

Adicionar uma impressora usando um endereço TCP/IP ou nome de host

Digite:

https://peseta2.eco.unicamp.br/printers/LaserMonoECO/.printer

Adicionar uma impressora Bluetooth, sem fio ou de rede que seja detectável

Adicionar uma impressora local ou de rede usando configurações manuais

19

Avançar

Cancelar

Clique em: Avançar

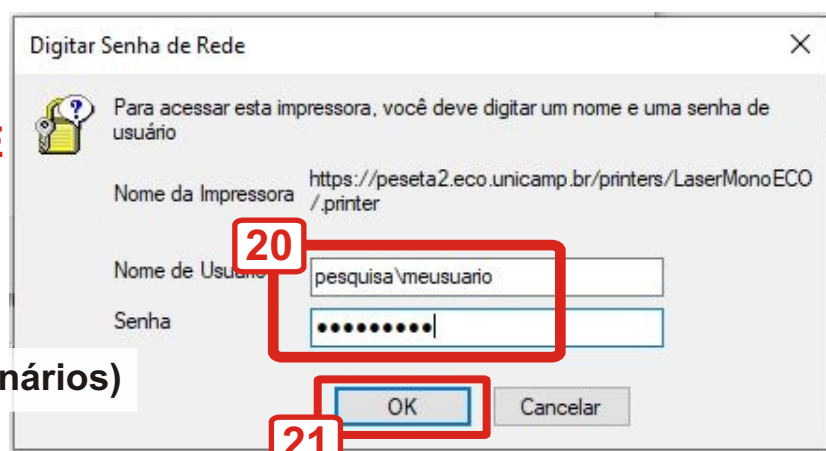
Informe o seu usuário e senha IE

Exemplos:

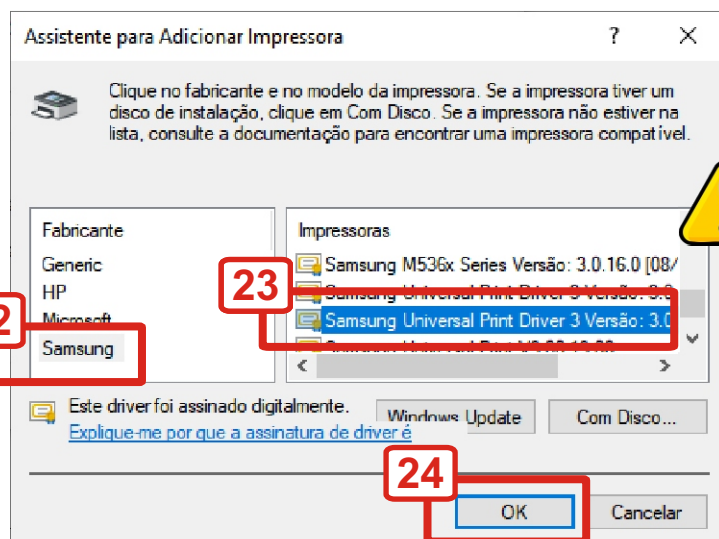
salas-us\123456 (graduação/pós)

salas-us\ex123456 (extensão)

pesquisa\usuario (docentes/funcionários)



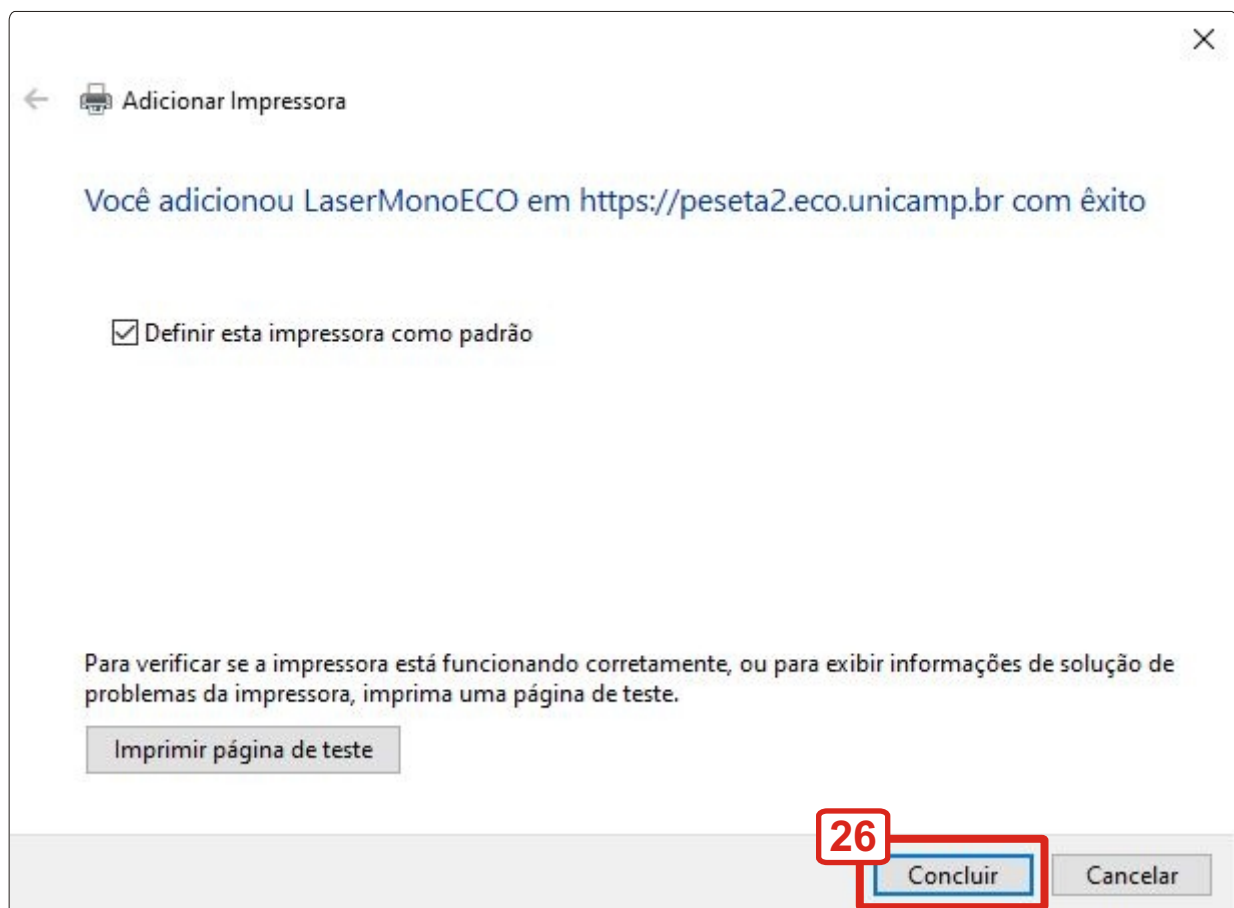
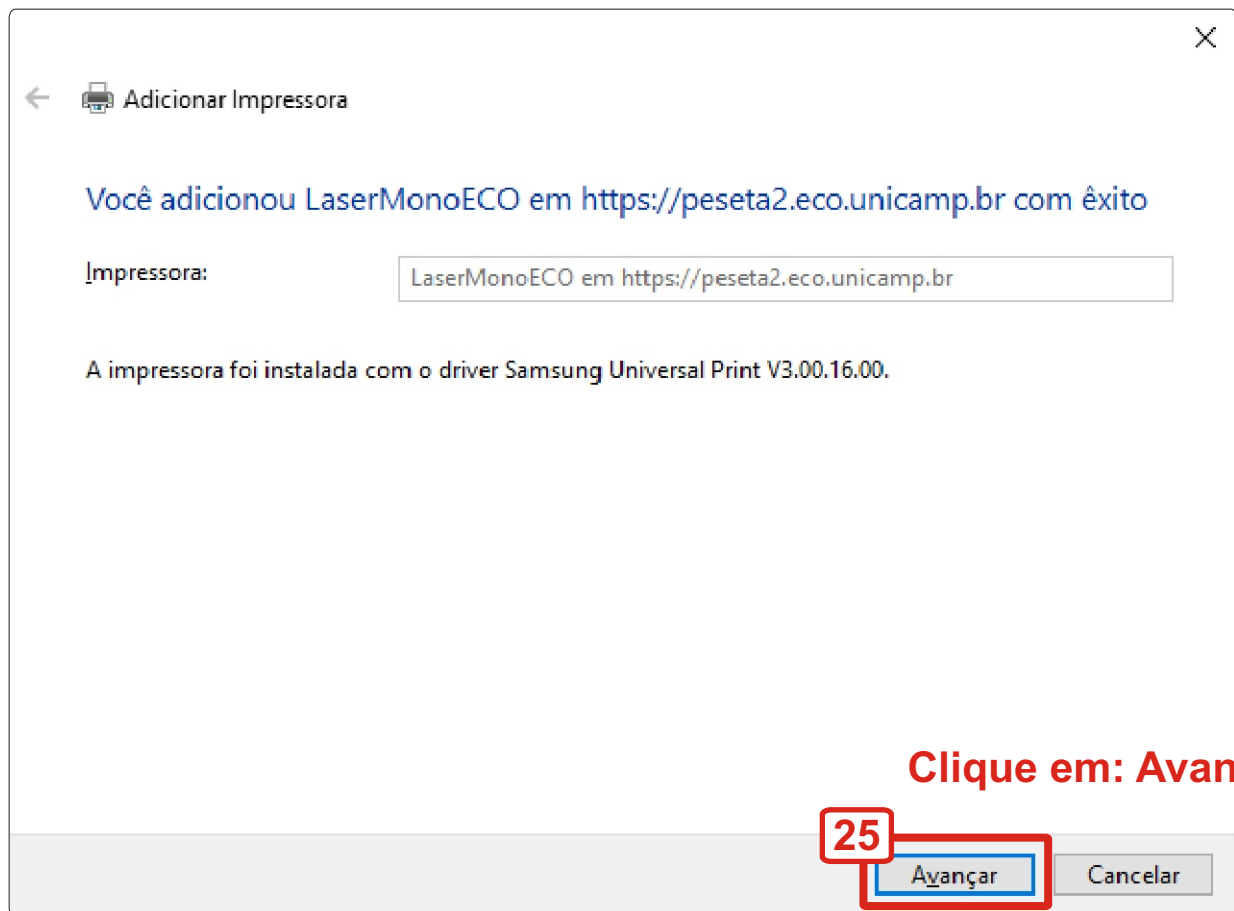
Clique em: OK



Selecione: Samsung

Selecione: Samsung Universal Print V3.00.16.00

Clique em: OK



Clique em: Concluir

Apple MacBook

1



Preferências do Sistema

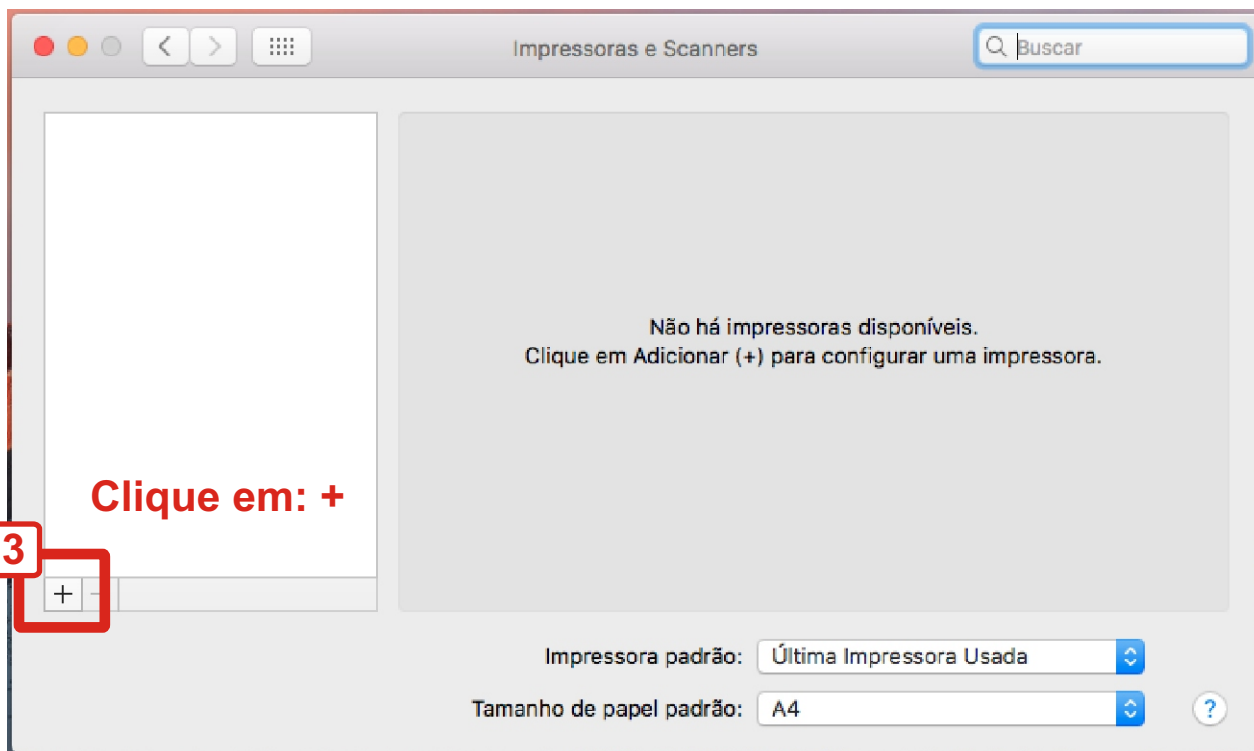
Acesse: Preferências do Sistema

2



Impressoras e Scanners

Acesse: Impressoras e Scanners



3

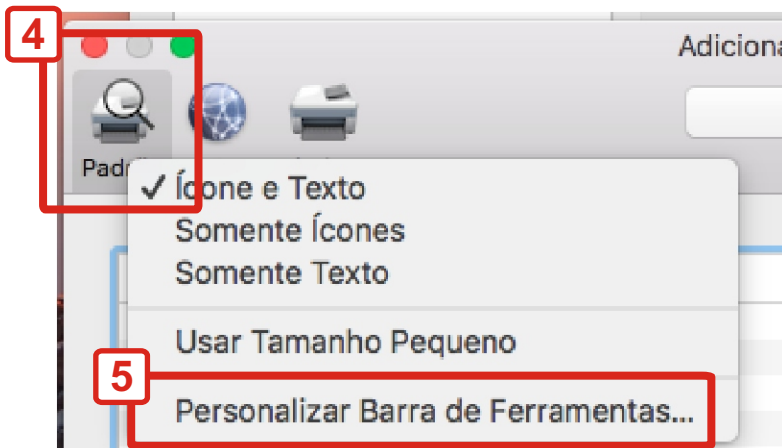
Clique em: +



Apertando a tecla:

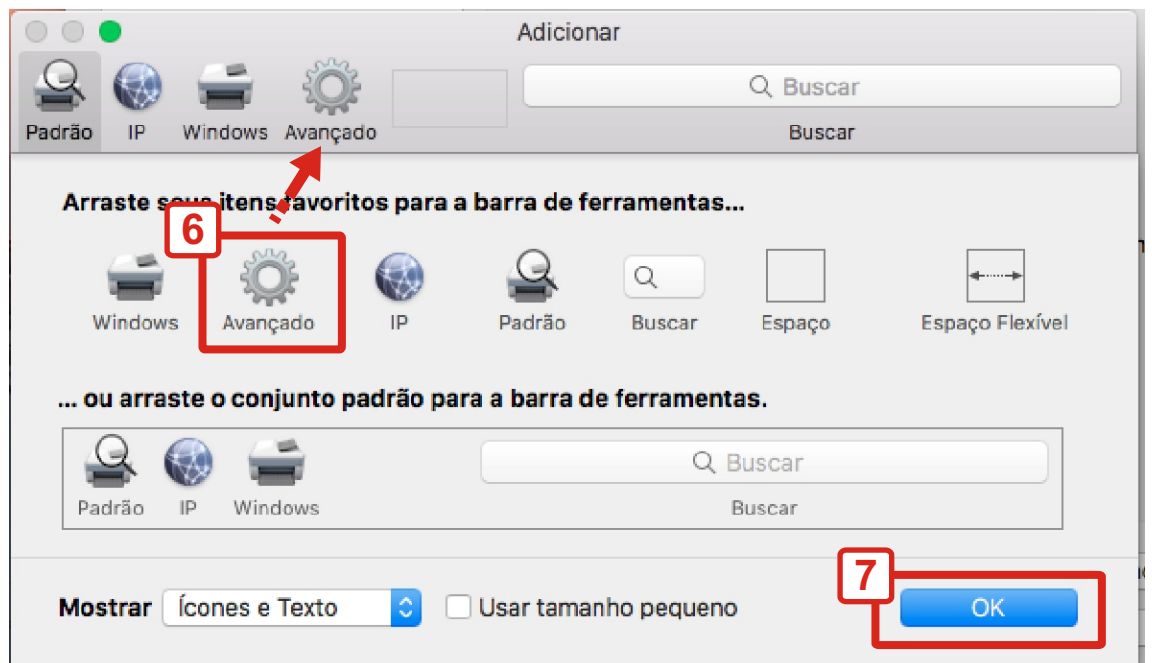


Clique em: Padrão

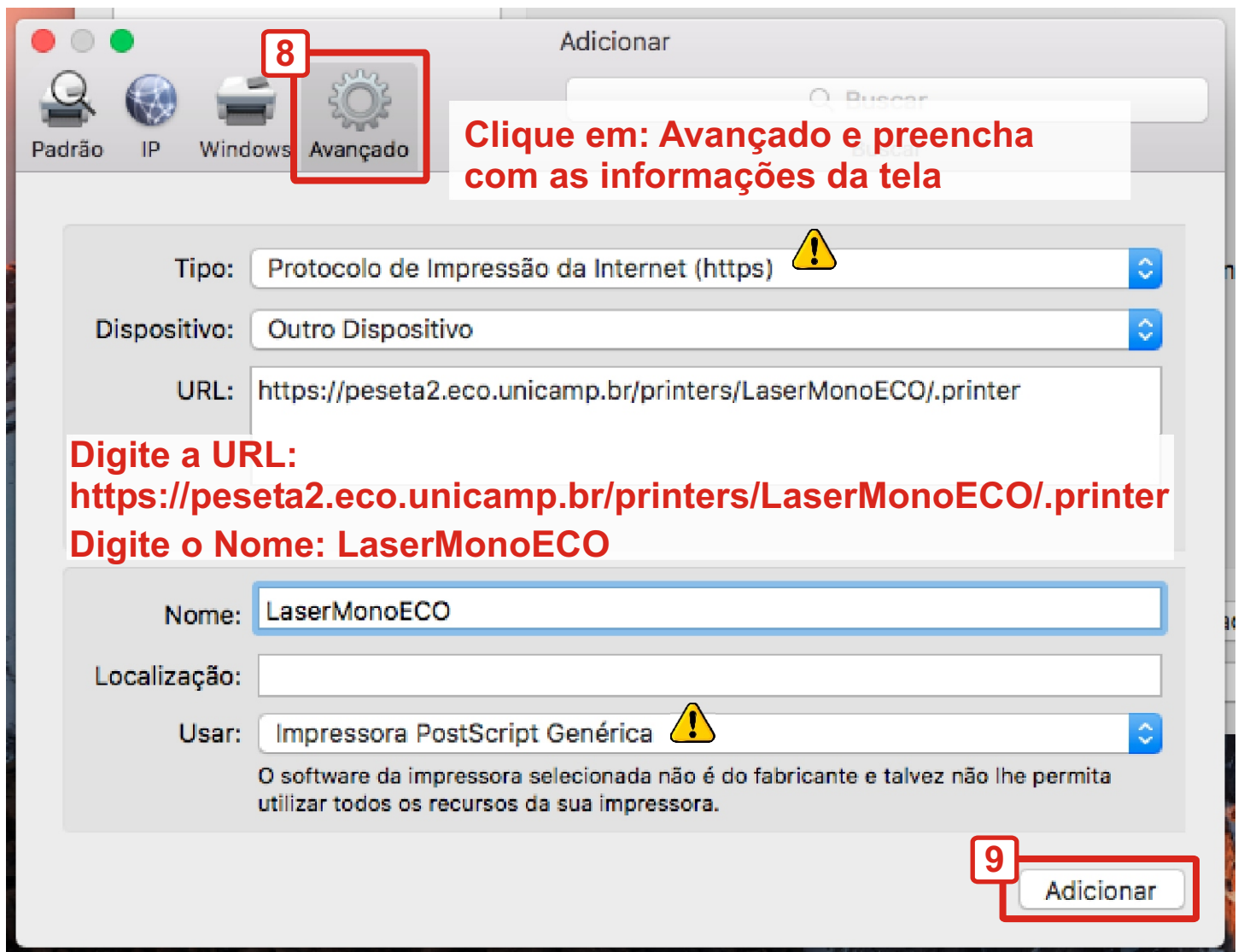


Clique em: Personalizar Barra de Ferramentas...

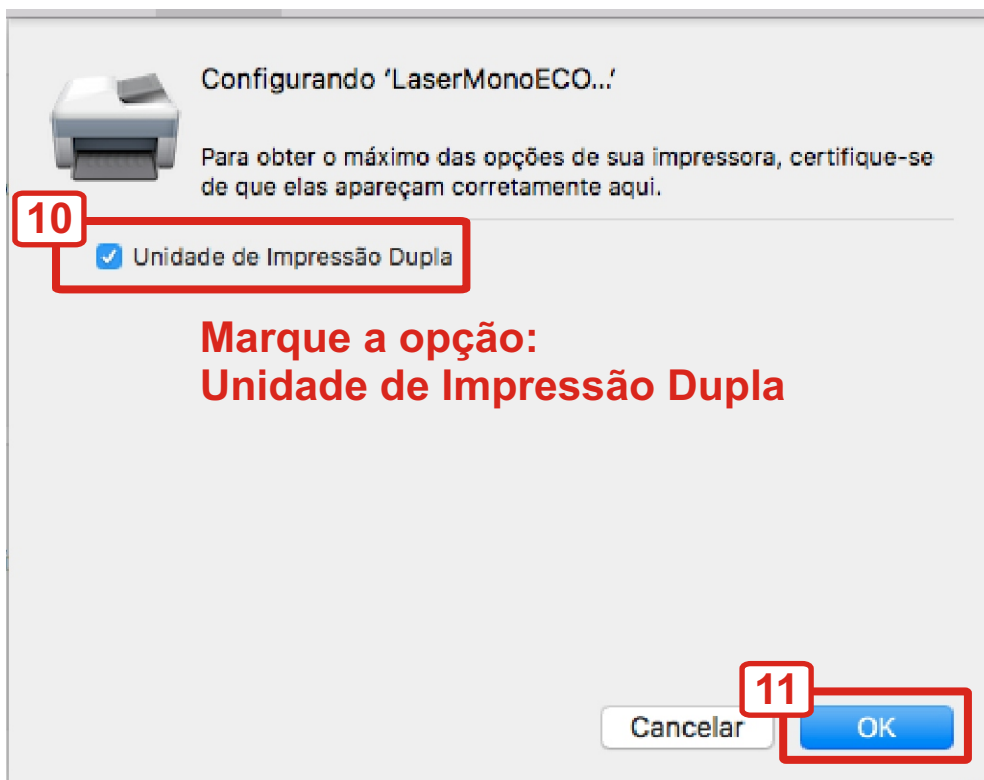
**Arraste a opção
Avançado para
Barra de
Ferramentas**



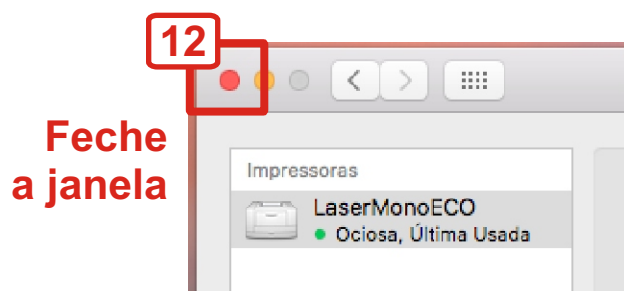
Clique em: OK



Clique em: Adicionar



Clique em: OK



Após enviar a primeira impressão, será solicitado usuário e senha

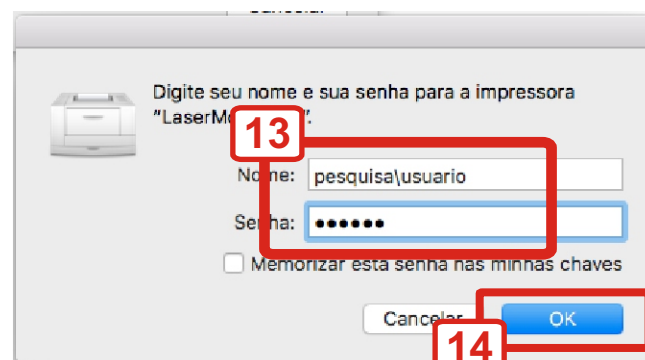
Informe o seu usuário e senha IE

Exemplos:

salas-us\123456 (graduação/pós)

salas-us\ex123456 (extensão)

pesquisa\usuario (docentes/funcionários)



Clique em: OK